

The JOY



of Serving



It's who we are



It's what we do

LOVE



LISTEN



LEARN



14200 SE 13th Pl
Bellevue, WA
98007
Pray, Serve,
Give
JubileeREACH.org
425-746-0506



Fun Raising Funds for Fun!

To raise funds to fund their fun 'end of school' overnight outing to the Lazer Tag Center, After Schoolers coordinated a Car Wash and raised over \$300! They worked hard to pay for their play.



Capitol Hill Presbyterian Church leaders visited JRC to converse and collaborate. How can we love, listen and learn the needs of our neighbors on Capitol Hill, build relationships, earn trust and step in the gaps to love our neighbors?



Where's the beef? It's now filling our freezer thanks to a big donation to our Community Kitchen. The kids help Chef Melinda fill the freezer knowing that it will end up in their tummies soon!

This week:



Pre-Schoolers Prepared for School

Not yet in kindergarten, Play & Learn pals Marie and Yumi giggle through graduation in preparation for school knowing how to count, calendar, read, tell time and talk in at least two languages...and they haven't started school! Aren't they cute?



Talk Time...that's what it's called when our diverse neighbors gather to practice their English...the language of relationship.



Standing Tall on stilts Before School!

Jubilee REACH

Heart Home

THRIFT STORE



Microsoft Futures?

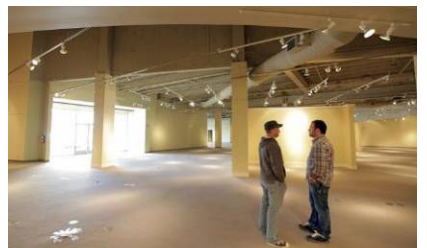
Amazing things have been accomplished After School this year! To celebrate their achievement, student leaders were honored with a trip through the Microsoft Home of the Future. This is usually an experience reserved for business leaders and dignitaries...like these kids one day!



Community Partners Maria and Doudia of Head Start stop by to collaborate and care for the needs of kids in our community.



Thanks Auction Volunteers! It was a night to celebrate the 50+ volunteers who executed an incredible auction event!



Help fill Mars Hill Bellevue's first Sunday service in their soon to be new home, the former John Danz Theater, June 13th at 10:30